

The teamabbey curriculum: OUR HOW

Our Big Ideas – Link taught subjects and the wider curriculum

Our big 6 ideas encompass our curriculum values and are specifically chosen to ensure we meet the needs of our students and the way in which they co-exist in the world around them. Providing golden threads that underpin community allowing students to be visible and valued. These ideas allow our students to understand the links in subjects and are linked to subjects throughout the curriculum



Nature



Rights



Exploration



Humankind



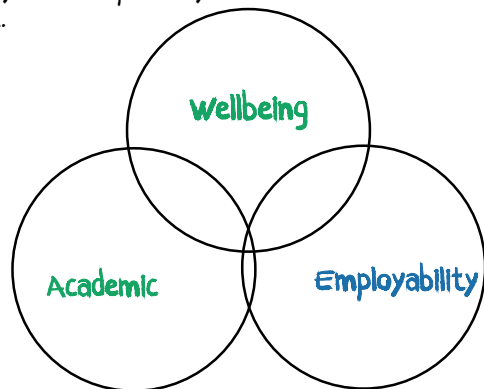
Creativity



Place and Space

The Foundations of our curriculum are built on our 3 tiers

Our curriculum has **wellbeing** at its **heart**. No learner is ready to develop if they do not have their basic needs met.



A **personalised curriculum** model that follows the national curriculum and allows our pupils access to a broad and balanced range of subjects - Core and Enriched

The curriculum is rich in opportunities to develop **enterprise and careers**.

This includes work Related learning, work experience, life skills and access to independent careers advice and employers enhanced through the schools STEAM Street Project

Building Knowledge and Skills

Curriculum Maps

Our curriculum maps and long term overviews show the sequential learning journey for pupils and how they build towards substantive concepts.



These outline the learning and teaching that is needed and map the knowledge and skills statements and big ideas.

Medium Term Plans

Knowledge and Skills Statements

Identify the personalised knowledge and skills that pupils are developing in each subject. We refer to this as disciplinary knowledge.



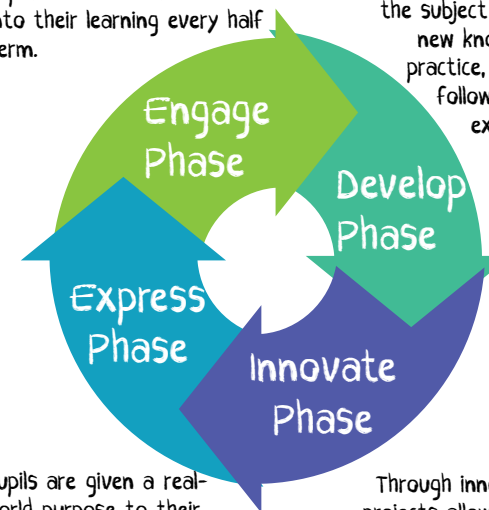
Pupils are assessed against the disciplinary and substantive knowledge they are securing in each subject.

Assessment

Pupil Outcomes

Delivery through the 4 Cornerstones

Creating a memorable experience to hook students into their learning every half term.



Allowing our pupils to delve deeper into the subject acquire **new knowledge, practice, finding, following and explaining**

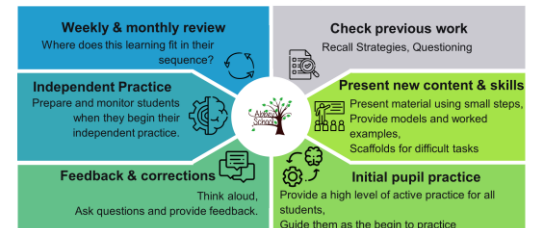
Pupils are given a real-world purpose to their learning. To showcase an end product e.g. using a community space, book signing or carnival

Through innovation projects allowing our children to Applying, building, reflecting, working reciprocally, taking on different roles and responsibilities

Our Pedagogical approach

Abbey Learning Cycle

Helping to develop our pupils long term memory



Our learning cycle is based on educational research and the needs of our pupils.

The Abbey Learning cycle shapes the pedagogy we see in our classrooms.

Core Curriculum Offer

English Maths Science PHSRE ICT

Curriculum Enrichment

PE DT Art and Design History Geography Performing Arts Careers and Enterprise Food Technology Modern world Preparation for Adulthood

Qualification Offer

Entry Levels, Functional Skills L1 and L2, GCSE and BTEC